

# 6000-SW SERIES

## Manual Swing Clamps | Product Overview and Dimensions

### Features:

- Left or right swing motion available
- 90° Swing clamp arm motion
- Higher clamping force than pneumatic version
- Though-hole mounting
- Clamp arm can be radially positioned 360°
- Handle can be radially positioned up to 180°

### Applications:

- Assembly
- Checking fixtures
- Welding fixtures
- Tensioning devices

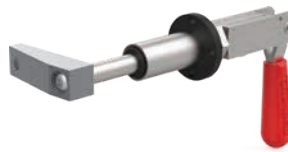
**6002-SWL**  
Clamp Arm  
Swing Left



**6002-SWR**  
Clamp Arm  
Swing Right



**6004-SWL**  
Clamp Arm  
Swing Left



**6004-SWR**  
Clamp Arm  
Swing Right



Shown in open (un-clamp) position.

## Technical Information | Holding Capacities | Dimensions

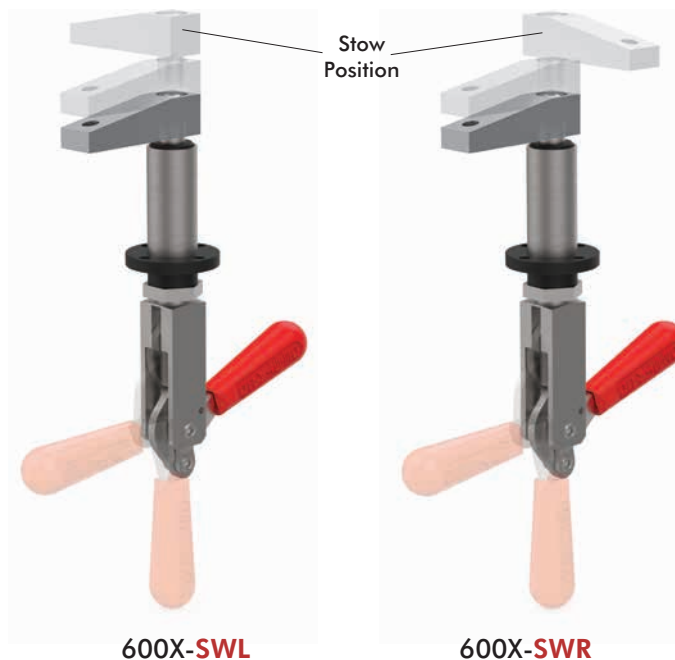
### Color Handles

Available on models in this series. Add -Y, -G, -B, -K to end of model number.



| Model    | Swing Direction | Max. Holding Capacity* | Total Stroke [in] mm | Stroke During Rotation [in] mm | Stroke Straight Pull [in] mm | Weight [lb] Kg |
|----------|-----------------|------------------------|----------------------|--------------------------------|------------------------------|----------------|
| 6002-SWL | LH              | [400 lbf]<br>1780 N    | [0.75]<br>19.1       | [0.53]<br>13.5                 | [0.22]<br>5.6                | [0.95]<br>0.43 |
| 6002-SWR | RH              | [400 lbf]<br>1780 N    | [0.75]<br>19.1       | [0.53]<br>13.5                 | [0.22]<br>5.6                | [0.95]<br>0.43 |
| 6004-SWL | LH              | [600 lbf]<br>2670 N    | [1.50]<br>38         | [0.87]<br>22                   | [0.63]<br>16                 | [1.32]<br>0,6  |
| 6004-SWR | RH              | [600 lbf]<br>2670 N    | [1.50]<br>38         | [0.87]<br>22                   | [0.63]<br>16                 | [1.32]<br>0,6  |

\*Straight pull. Does not account for clamp arm.



# 6000-SW SERIES

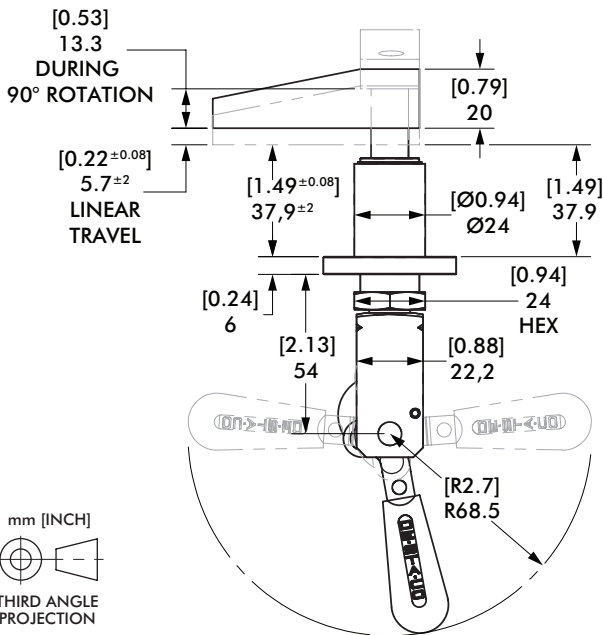
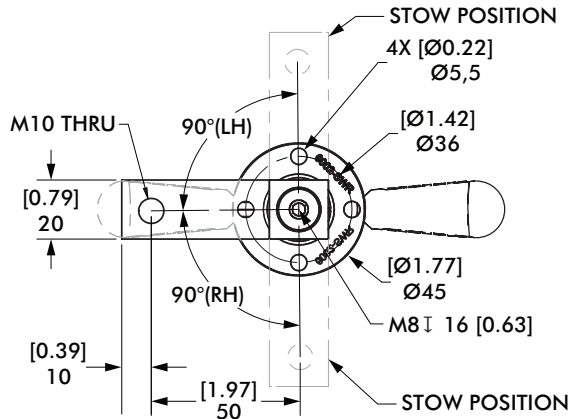
## Manual Swing Clamps | Dimensions

### 6002-SWL/SWR



6002-SWL

6002-SWR

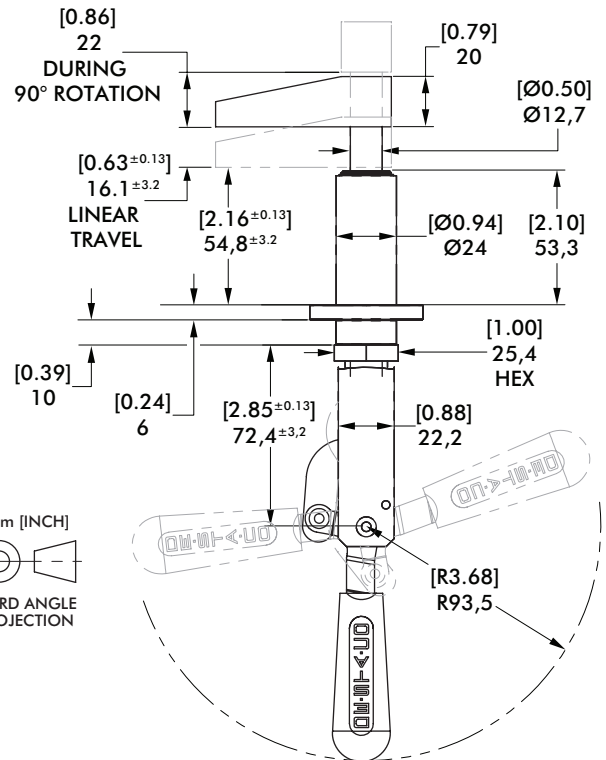
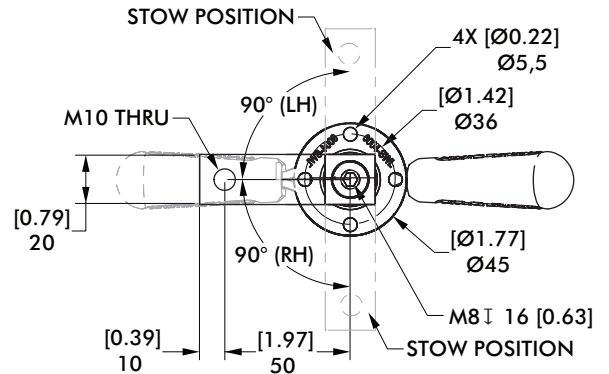


### 6004-SWL/SWR



6004-SWL

6004-SWR



| Applied Force (on handle)          | [lbs] | N     | [25]  | [20]  | [15] | [10] |
|------------------------------------|-------|-------|-------|-------|------|------|
|                                    | 111   | 89    | 67    | 44    |      |      |
| Plunger Pull Force (straight pull) | [360] | [288] | [216] | [144] |      |      |
|                                    | 1601  | 1281  | 961   | 641   |      |      |
| Clamp Force (with arm shown below) | [229] | [189] | [149] | [108] |      |      |
|                                    | 1019  | 841   | 663   | 480   |      |      |

| Applied Force (on handle)          | [lbs] | N     | [40]  | [30]  | [20] | [10] |
|------------------------------------|-------|-------|-------|-------|------|------|
|                                    | 178   | 133   | 89    | 44    |      |      |
| Plunger Pull Force (straight pull) | [576] | [432] | [288] | [144] |      |      |
|                                    | 2562  | 1922  | 1281  | 641   |      |      |
| Clamp Force (with arm shown below) | [323] | [269] | [189] | [108] |      |      |
|                                    | 1437  | 1197  | 841   | 480   |      |      |

Higher clamping forces than pneumatic version.